

# SHUTE HARBOUR MARINA RESORT

FIXED-PRICE HOME AND BERTH PACKAGES FROM \$3.95M



Artist Impression

## THE WATERFRONT HOUSING COLLECTION

LOT 103  
THE LIFESTYLE

LOT 103

# THE LIFESTYLE

TWO STOREY

## LIVE, WORK AND PLAY IN THE WHITSUNDAYS

This home is the ultimate balance between modern grandeur and care-free family functionality. Architecturally designed to maximise its waterfront position overlooking the marina.

With outdoor living that truly defines the lifestyle on offer, a fluid indoor/outdoor existence, with a beautiful flow through the open plan living area to the swimming pool.

You'll never get sick of the calming ocean views and magical sunsets in this brilliant location.

3   
BEDROOMS

2.5   
BATHROOMS

2   
CAR SPACES

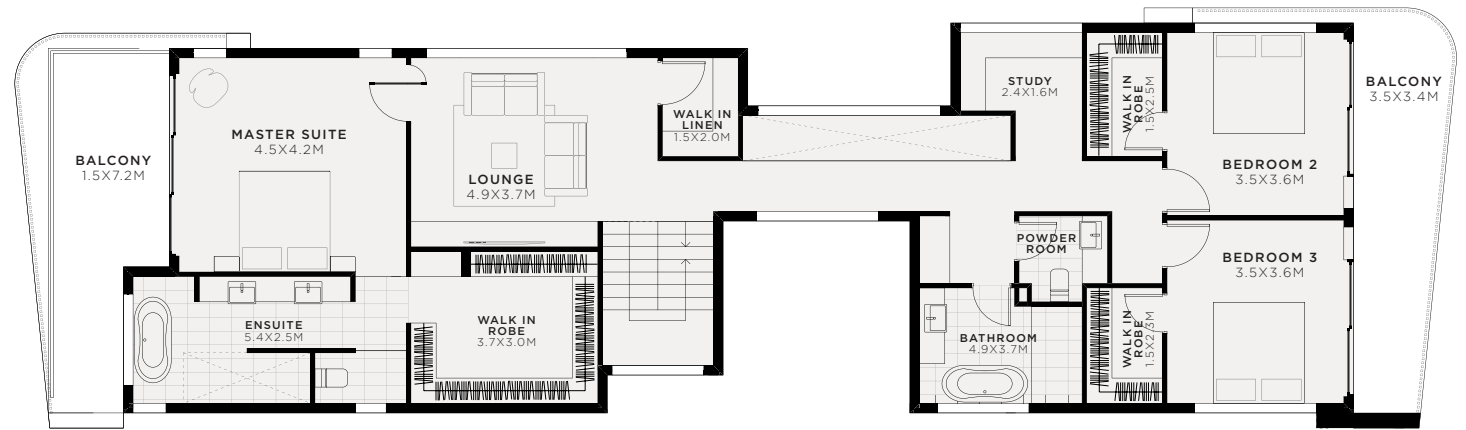
200.95M<sup>2</sup>  
GROUND FLOOR  
AREA

60.69M<sup>2</sup>  
EXTERNAL AREA

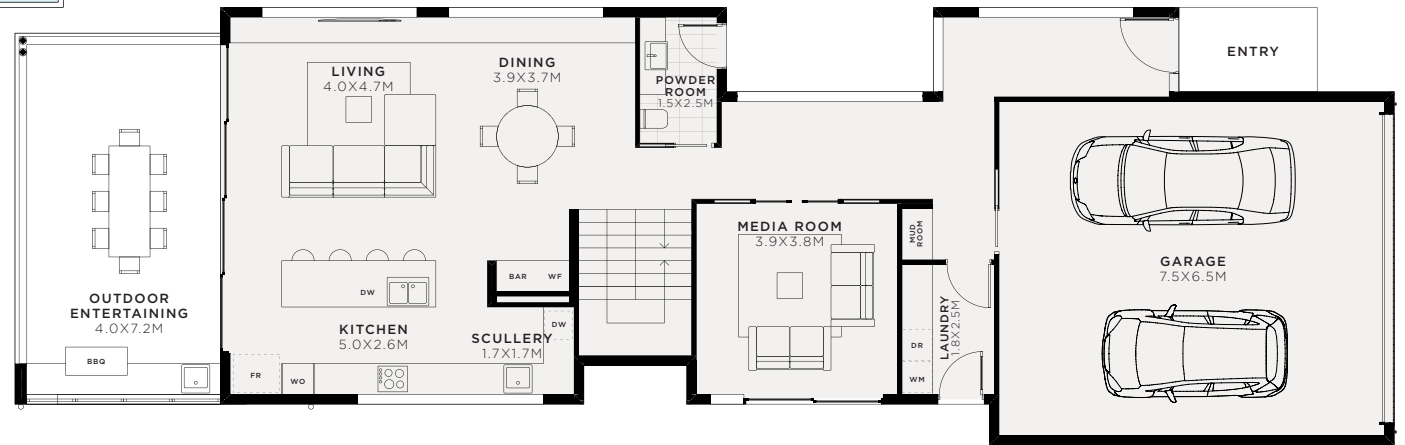
184.4M<sup>2</sup>  
FIRST FLOOR  
AREA

385.35M<sup>2</sup>  
TOTAL AREA

324.66M<sup>2</sup>  
TOTAL INTERNAL  
AREA



FIRST FLOOR



GROUND FLOOR





DISCOVER  
**RESORT-STYLE**  
LIVING



**FOR MORE INFORMATION, CONTACT**

Sophia Cross +61 474 276 981  
[sophia@taylorsspecialists.com.au](mailto:sophia@taylorsspecialists.com.au)

Rob Taylor +61 428 466 124  
[rob@taylorsspecialists.com.au](mailto:rob@taylorsspecialists.com.au)

**SHUTE HARBOUR**  
**MARINA RESORT**



[SHUTEHARBOURMARINA.COM](http://SHUTEHARBOURMARINA.COM)