



WATERFRONT APARTMENT No.16



hg developments



theboatyardbulimba.com.au



THE
BOATYARD
BULIMBA

4 BED 2.5 BATH 2 CAR + FAMILY ROOM | LEVEL TWO

AREAS m²

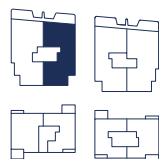
Internal Area	149
External Area	18
Total Area	167

ROOM SIZES m²

Master	3.0 x 4.1
Bedroom 2	3.0 x 3.2
Bedroom 3	3.0 x 3.1
Bedroom 4 / MP	3.0 x 3.0
Living / Dining	5.0 x 4.7
Kitchen	3.8 x 3.9
Family Room	3.7 x 4.2

LEGEND

M	Master
B	Bedroom
MP	Multi purpose
SC	Scullery
F	Family Room
ST	Storage
L	Laundry
BQ	Barbecue



SCALE



hg developments

Disclaimer: The information in this document has been produced for advertising and information purposes only and is not intended to form part of any enforceable agreement at law. All reasonable care has been taken in preparing this document, however no guarantee, warranty or representation is given by any of its agents or consultants that information contained in this document is correct, accurate or reliable. Interested parties should undertake their own enquiries. All apartments are subject to development approval, contract and availability. Plans and drawings are intended only as a guide and an aid to further investigations by potential purchasers. Any areas shown are indicative and approximate only. Final areas and layouts are subject to design changes, required governmental approvals and final survey. Layouts, schedules of finishes and inclusions may change in accordance with any contract for sale and related documents. To the maximum extent permitted by law, the Developer does not accept any responsibility for any inaccurate or misleading information in, or for any omission from, the material contained in this document. Ultimately, potential purchasers must make their own enquiries and rely on their own judgment and independent advice. PD.180301